

REGIONE LAZIO
PROVINCIA DI ROMA
COMUNE
GALLIANO NEL LAZIO

PROGETTO DI CIMITERO
A CARATTERE COMPENSATORIALE
" Spiga Giovanni Stadio II "

Soggetto Proponente: **Costruttrice ATZ 72**



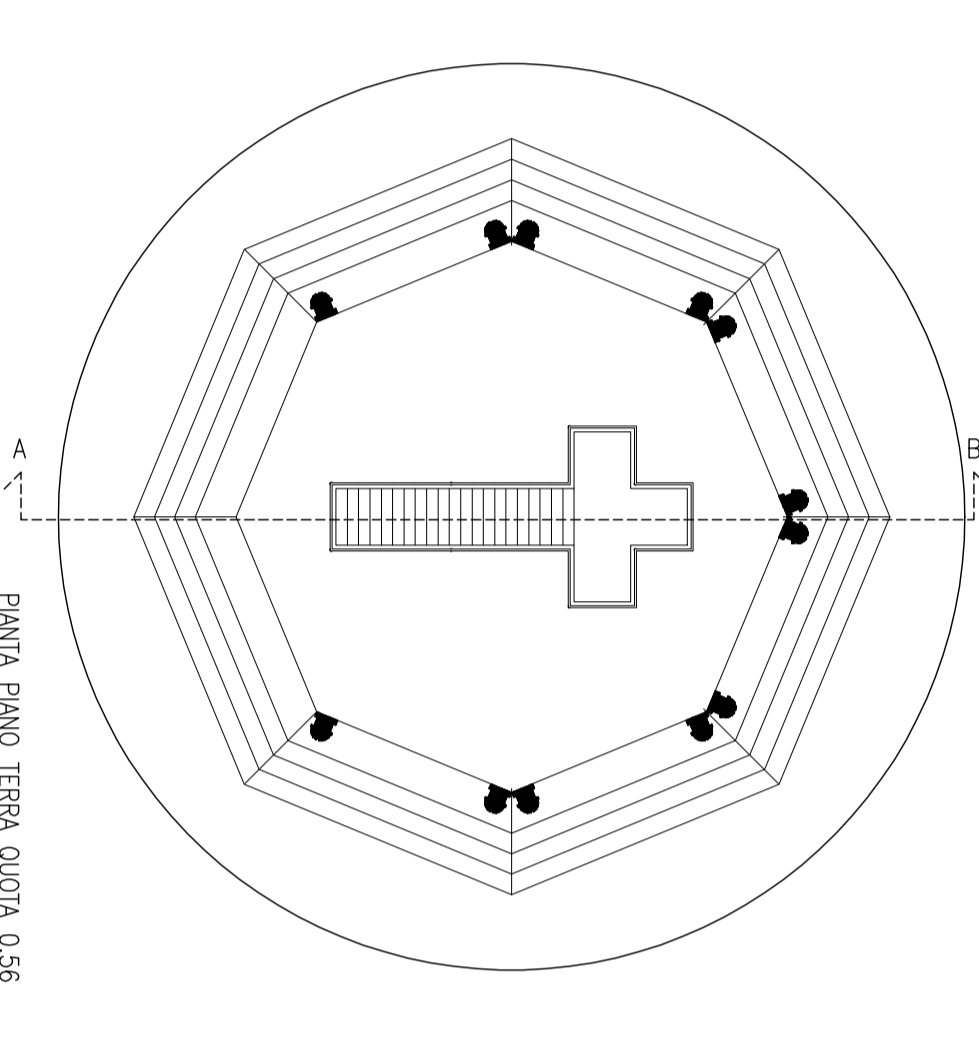
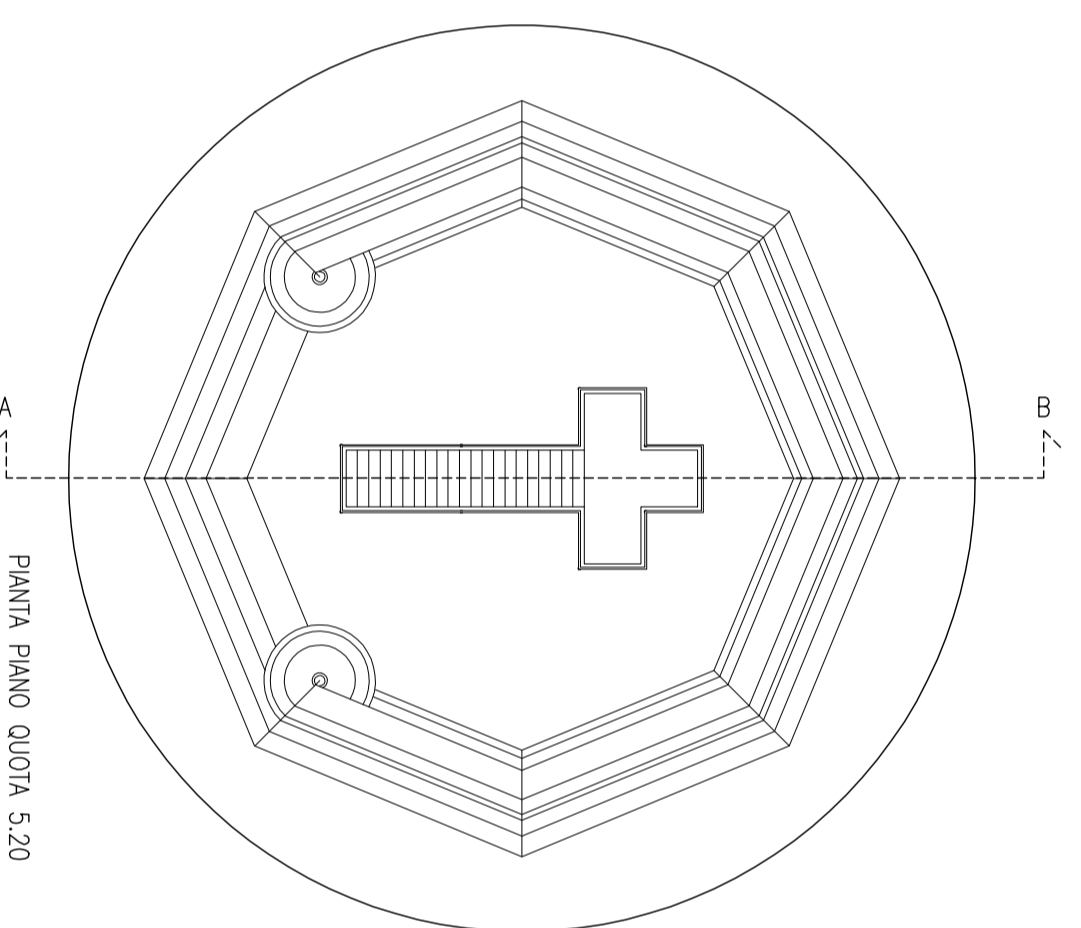
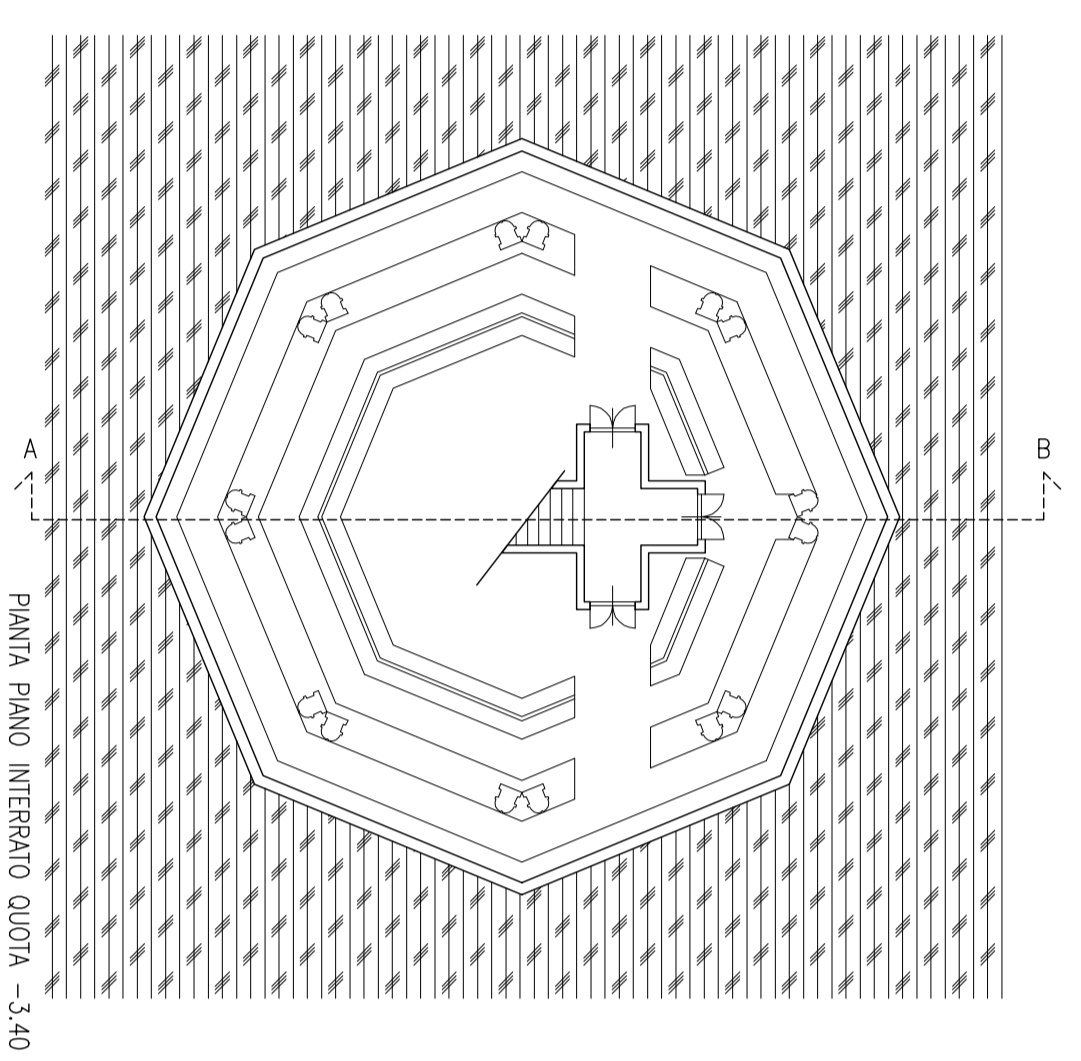
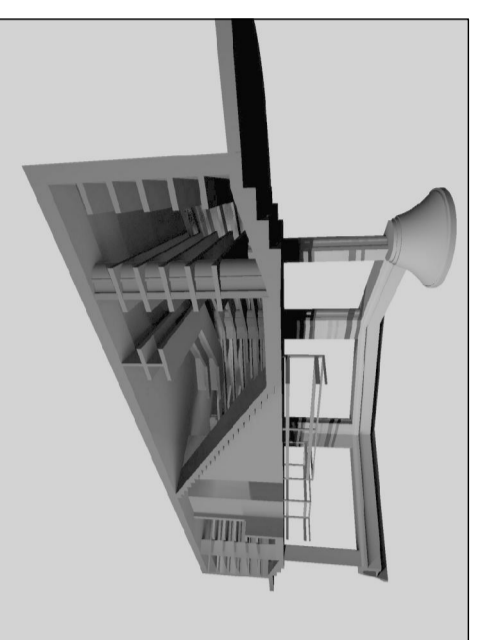
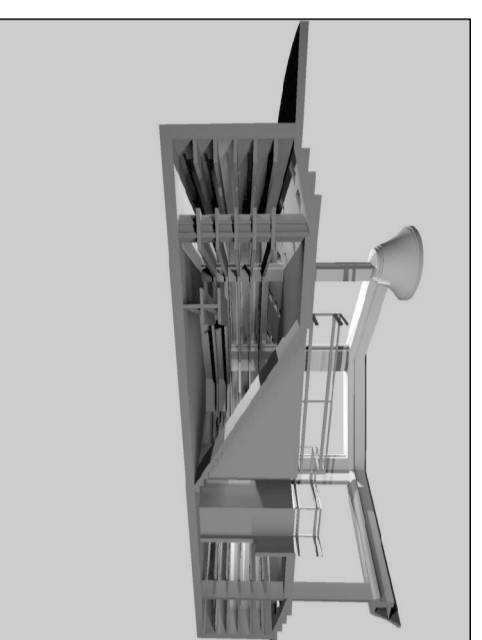
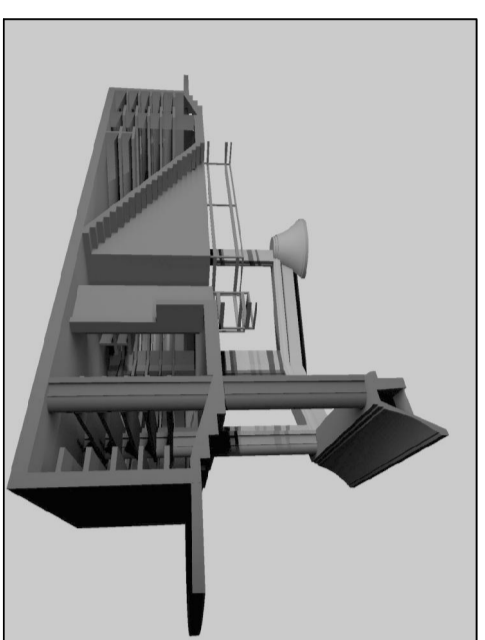
Libera* Libera* Libera*

Progettisti: Riva S.p.A. (Architetto) - A.P. S.p.A. (Architetto) - I.T.E. S.p.A. (Architetto)

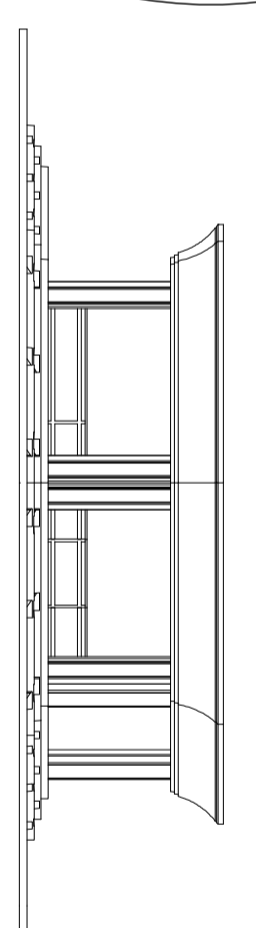
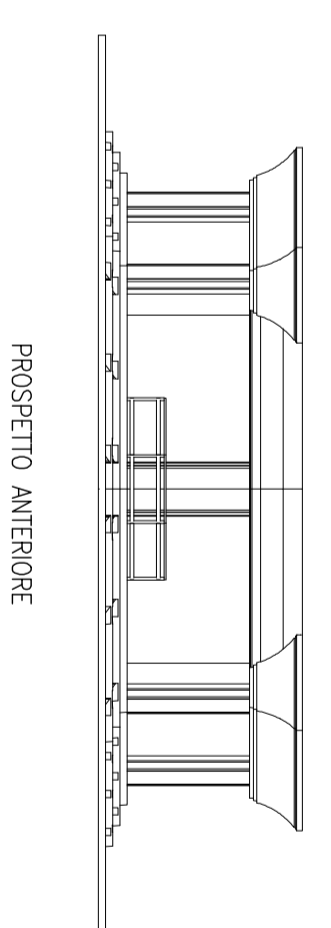
Collaboratori: Gianfrancesco De Luca (Architetto) - Gianfrancesco De Luca (Architetto) - Gianfrancesco De Luca (Architetto)

TITOLO: OSSARIO COMUNE	Scala: 1:200
DATA: 08/02/2013	ELABORATO E
AGGIORNAMENTI	15/16

Sezioni Prospettiche A-B

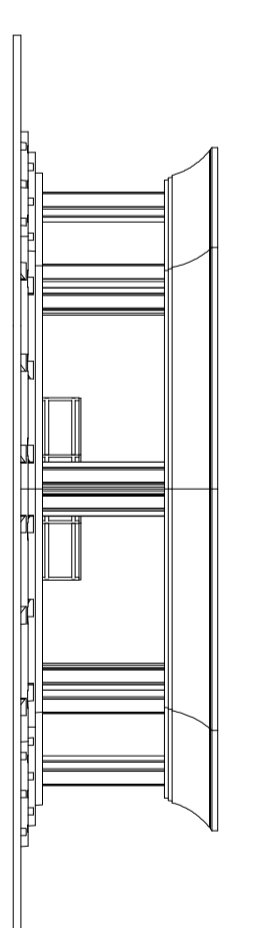


DATI TECNICI	
Sp. Coperto Intervento	mq= 264,77
Altezza Utile Intervento	m= 3,40
Altezza Max	m= 5,80
Volume	mc= 908,21

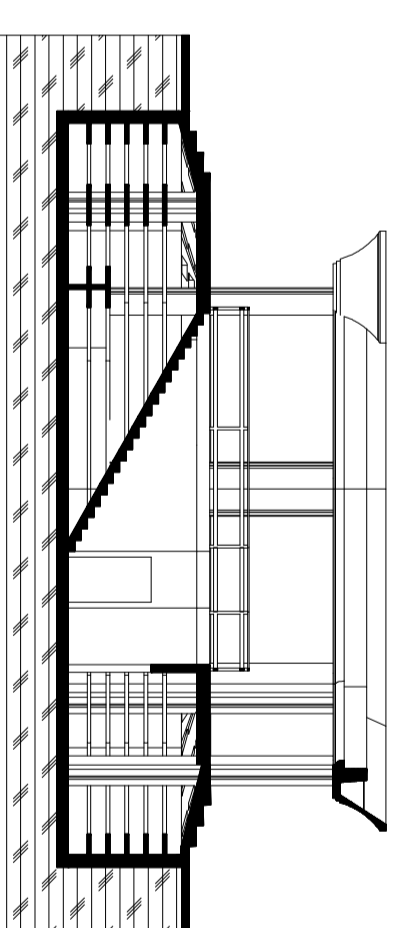


PROSPETTO LATERALE DX

PROSPETTO LATERALE DX



PROSPETTO POSTERIORE



SEZIONE A-B

VISTE PROSPETTICHE

