

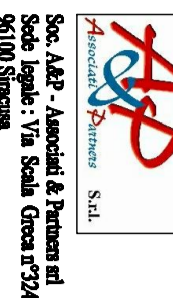
**REGIONE LAZIO**  
**PROVINCIA DI ROMA**  
**COMUNE**  
**GALLIANO NEL LAZIO**

**PROGETTO DI CANTIERO**  
**A CARATTERE COMPENSATORIO**  
**" Spina Giovanni Stabile II "**

**Soggetto Proponente: Costruttrice ATT spa**



Rem S.p.A.  
 Via Roma 41 (Cantina)  
 00121 Roma  
 067178111  
 0671781111



A.P.  
 Via L. Galvani 21  
 00187 Roma  
 0671781111  
 0671781111



I.T.  
 Via L. Galvani 21  
 00187 Roma  
 0671781111  
 0671781111

**Progettisti:**  
 Arch. Massimo Pini  
 00121 Roma  
 0671781111  
 0671781111

**Collaboratori:**  
 Arch. Massimo Pini  
 00121 Roma  
 0671781111  
 0671781111

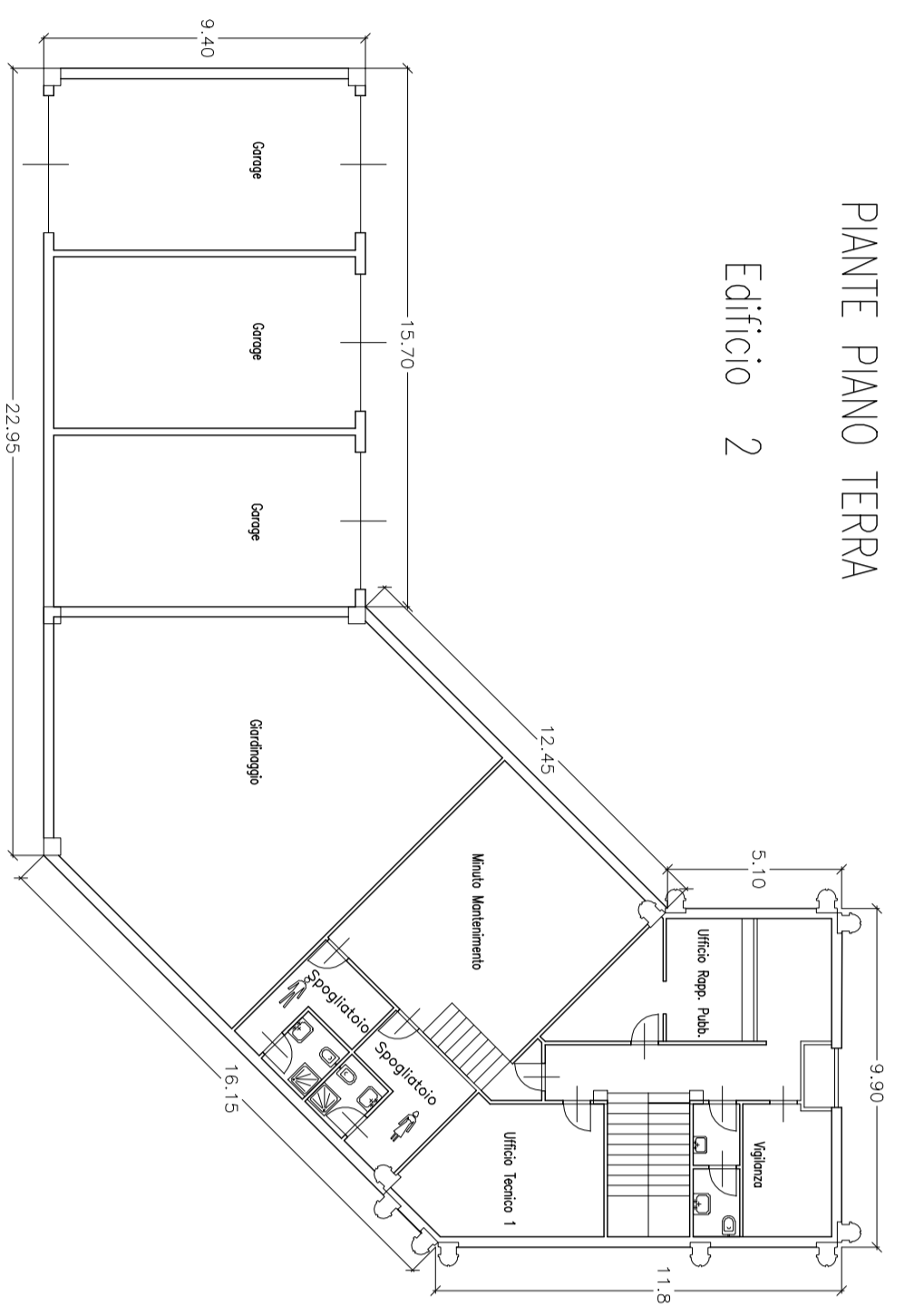
|                        |              |
|------------------------|--------------|
| TITOLO: EDIFICI UFFICI | Scala: 1:200 |
| DATA: 08/02/2013       | ELABORATO E  |
| AGGIORNAMENTI          | 10/16        |

**DATI TECNICI PALZZ. 1**

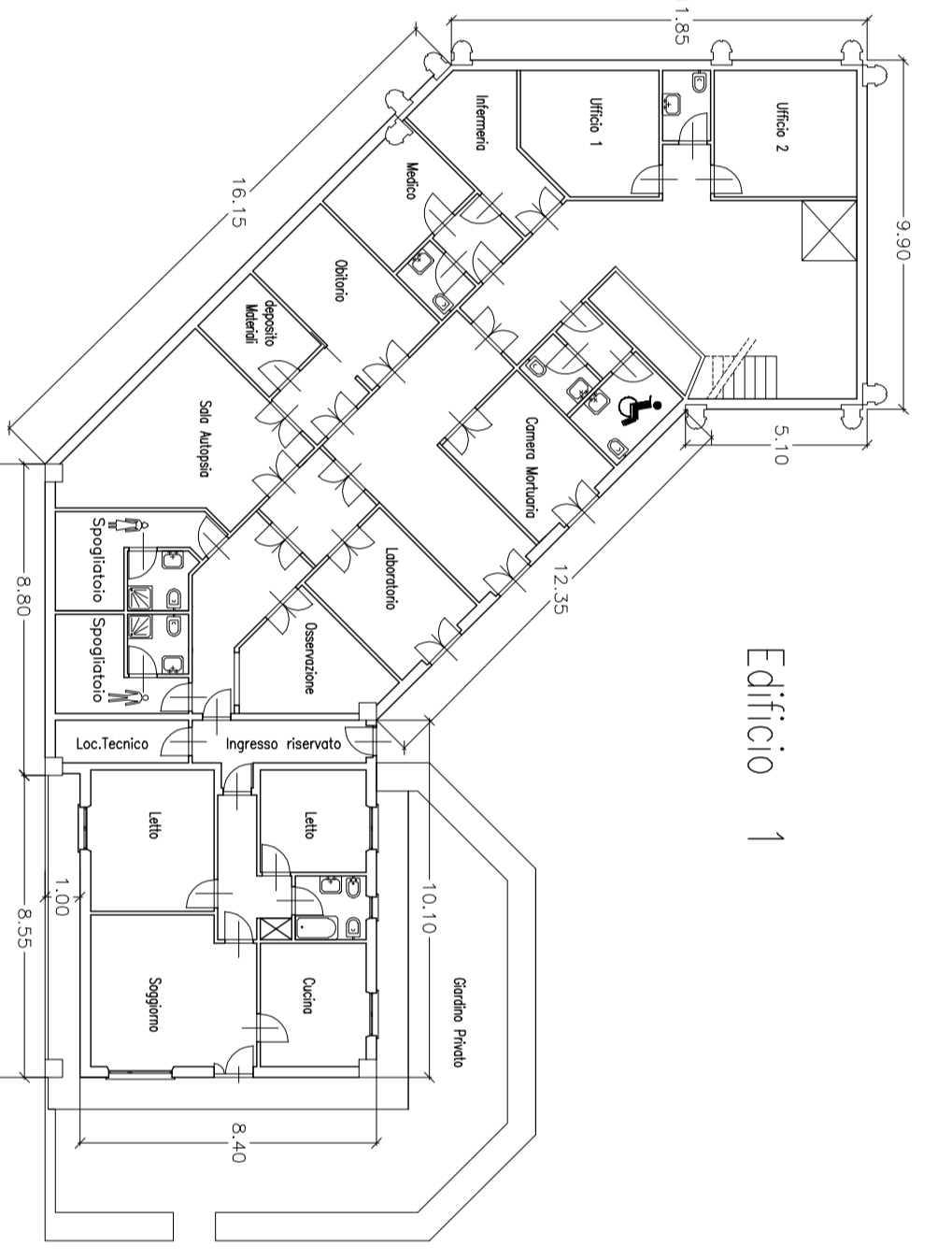
|                  |              |
|------------------|--------------|
| Sup. Coperta     | mq.=379,89   |
| Sup. Complessiva | mq.=462,99   |
| Volume           | mc.= 2100,62 |
| Altezza Max      | ml.= 9,30    |

**DATI TECNICI PALZZ. 2**

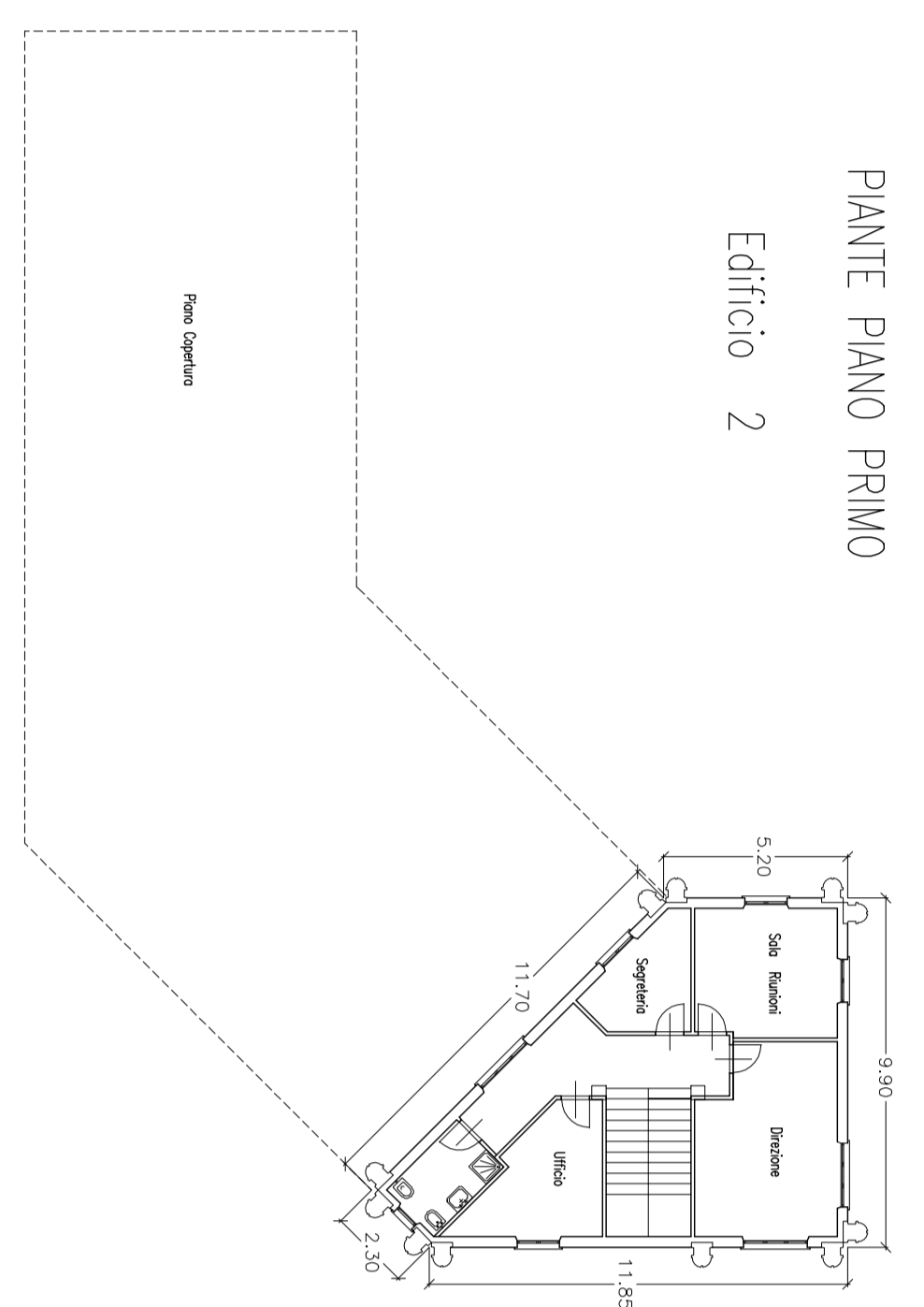
|                  |              |
|------------------|--------------|
| Sup. Coperta     | mq.=483,37   |
| Sup. Complessiva | mq.=600,07   |
| Volume           | mc.= 2284,32 |
| Altezza Max      | ml.= 9,30    |



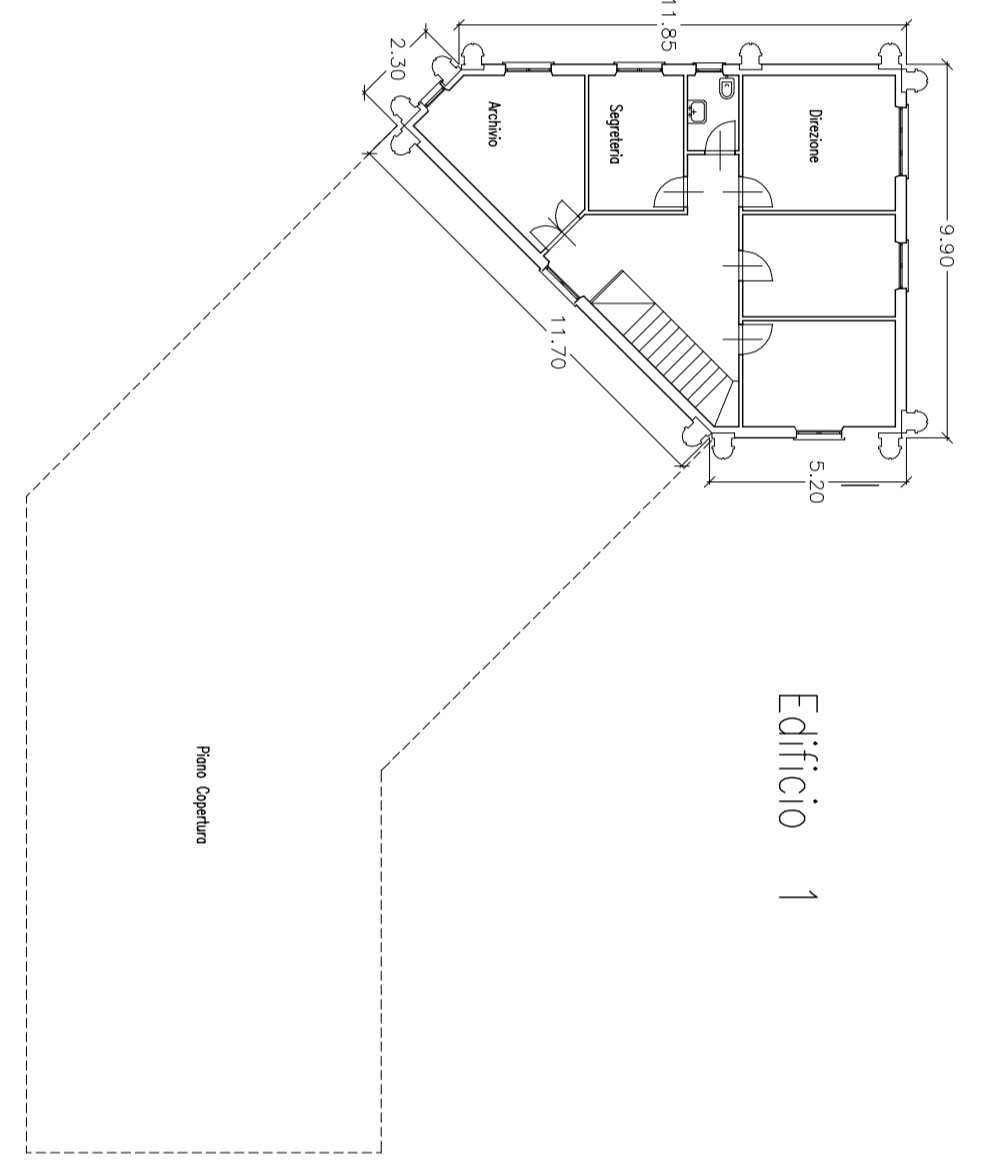
Edificio 2



Edificio 1

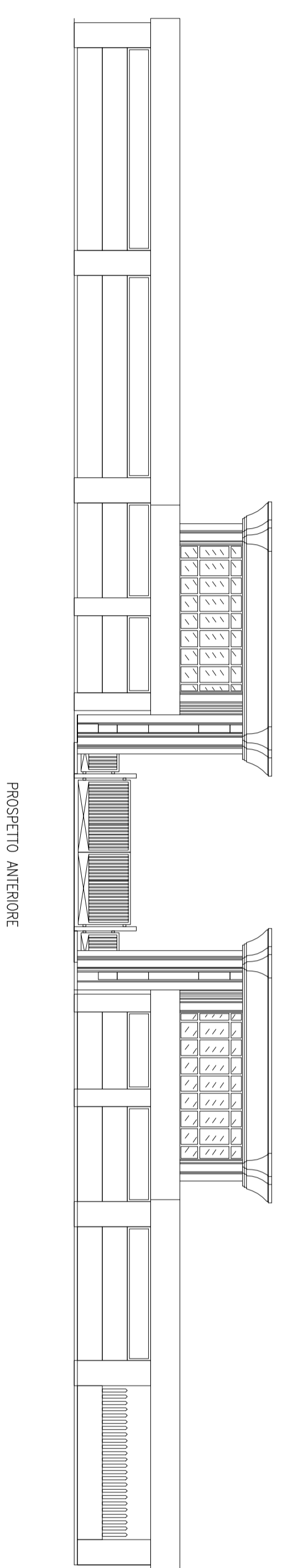


Edificio 2

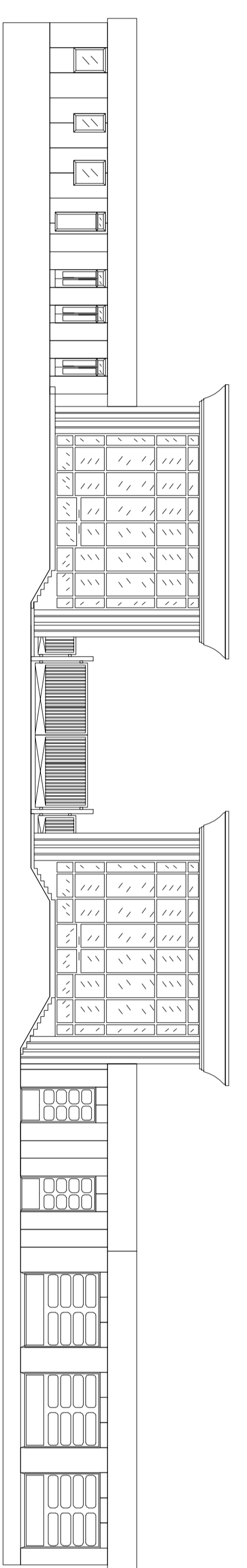


Edificio 1

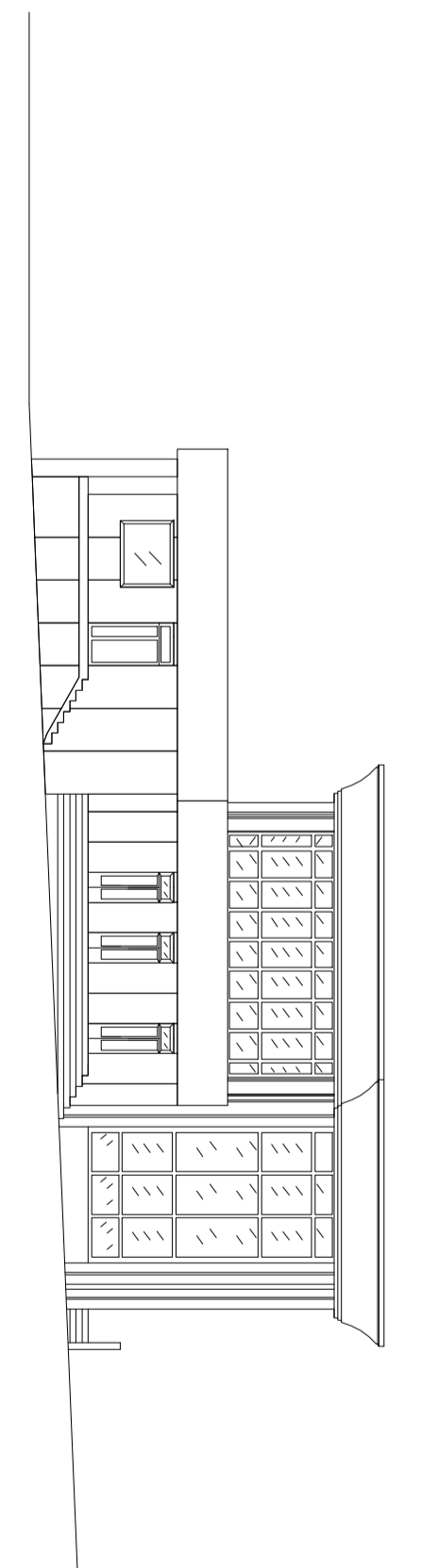
**PIANTE PIANO PRIMO**



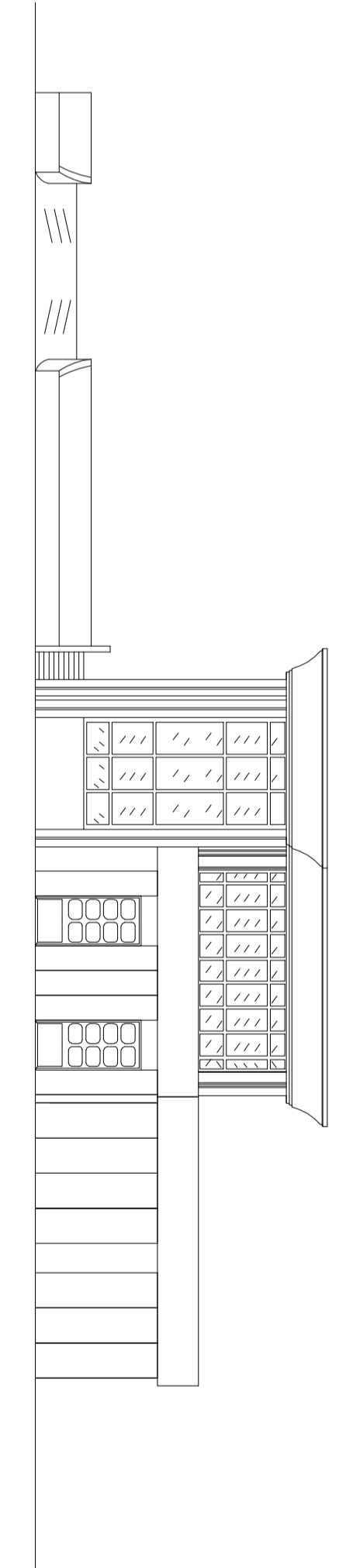
PROSPETTO ANTERIORE



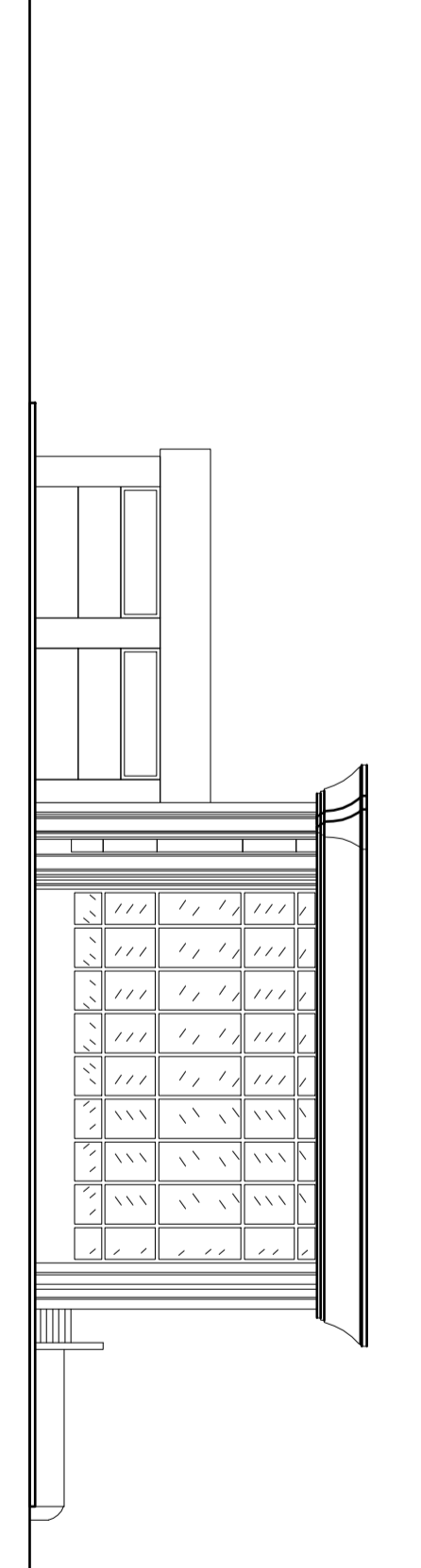
PROSPETTO POSTERIORE



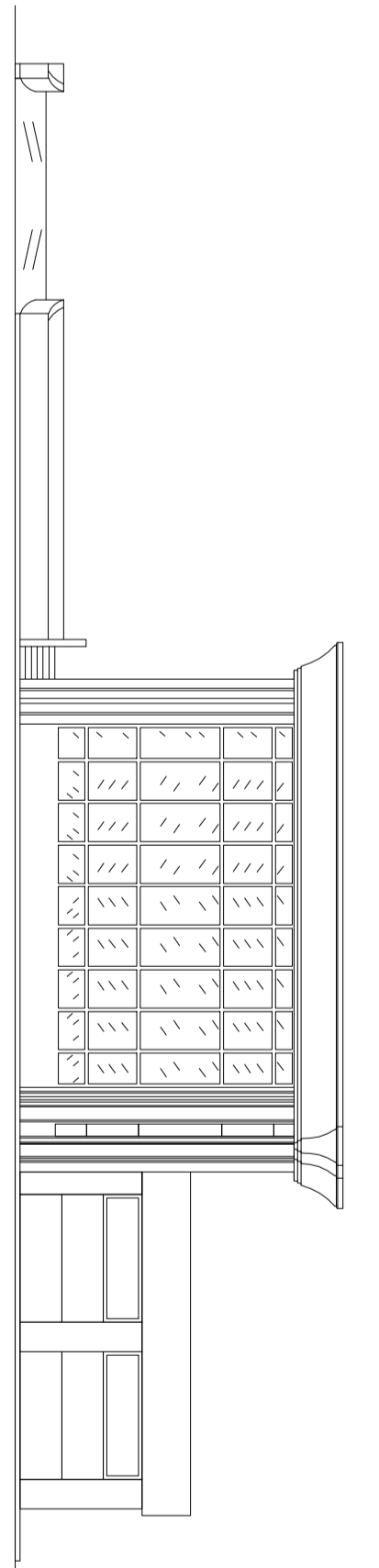
PROSPETTO LATERALE



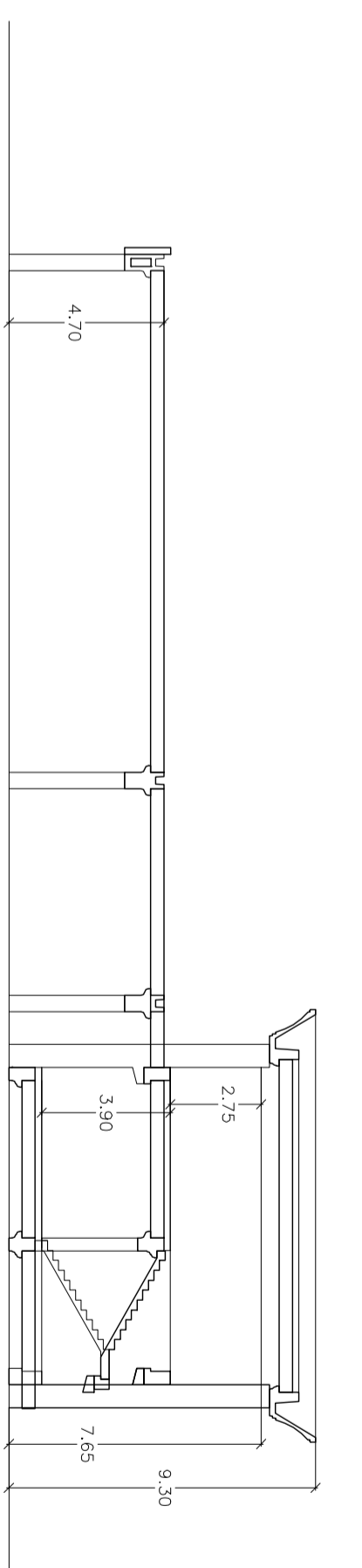
PROSPETTO LATERALE



PROSPETTO LATERALE



PROSPETTO LATERALE



SEZIONE A-B

